

# iDempiere

ERP - Gestionale Open Source

Marco Longo

# iDempiere

Sottotitolo

Uno strumento didattico per ingegnerizzare e standardizzare un software (<http://it.wikipedia.org/wiki/Ingegnerizzazione>)

# Agenda

Cos'è Idempiere  
Scegliere un Gestionale Aziendale  
Strumenti di Sviluppo  
Solidità-Estensibilità-Integrazione  
Nuovo Modello di Business

# iDempiere

Gestionale Aziendale ERP



- Internazionale
- OpenSource
- Framework

[www.idempiere.com](http://www.idempiere.com)  
[wiki.idempiere.org](http://wiki.idempiere.org)



# iDempiere

Open Source ERP System



**Open Revolution** ITALIAN SUPPORT  
[www.idempiere.com](http://www.idempiere.com) - [www.openrevolution.it](http://www.openrevolution.it)

# iDempiere

Ohloh BY BLACK DUCK

Follow @Ohloh

Ohloh Meta

Sign In

Projects

People

Organizations <sup>Beta</sup>

Tools

Code

Projects

Search...



## iDempiere

Settings | Report Duplicate

Very High Activity

### In a Nutshell, iDempiere...

...has had 9,158 commits made by 88 contributors representing 3,153,864 lines of code

...is mostly written in SQL with a very well-commented source code

...has a well established, mature codebase maintained by a very large development team with increasing Y-O-Y commits

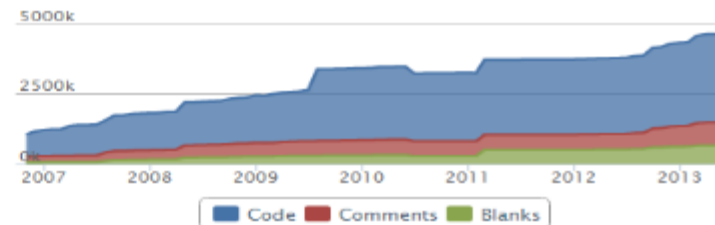
...took an estimated 912 years of effort (COCOMO model) starting with its first commit in November, 2006 ending with its most recent commit about 9 hours ago

### Languages



XML	47%	SQL	30%
Java	22%	11 Other	1%

### Lines of Code



### Activity

#### 30 Day Summary

May 5 2013 — Jun 4 2013

97 Commits  
12 Contributors

#### 12 Month Summary

Jun 4 2012 — Jun 4 2013

1834 Commits  
Up +1435 (359%) from previous 12 months  
29 Contributors  
Up +3 (11%) from previous 12 months

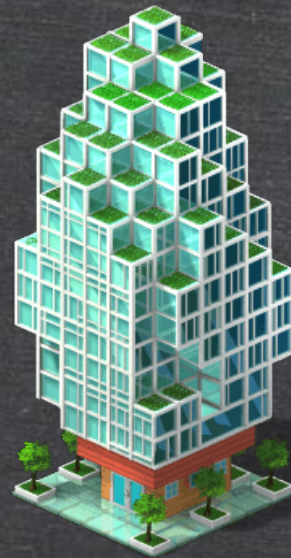
### Commits per Month



# iDempiere

E' tempo di fare una  
Login !

# Gestionale - ERP





# Gestionale - ERP

	Funzionalità	Costo	Modifiche	Futuro	Interna zionale	Open Source
Da Edicola	BASSE	BASSO	NO	NO	NO	NO
Piccole Software H.	BASSE	BASSO	SI	SI-NO	NO	NO
Top Erp (SAP-AX)	ALTE	ALTO	SI	SI	SI	NO
iDempeire	ALTE	BASSO	SI	SI-SI	SI	SIv

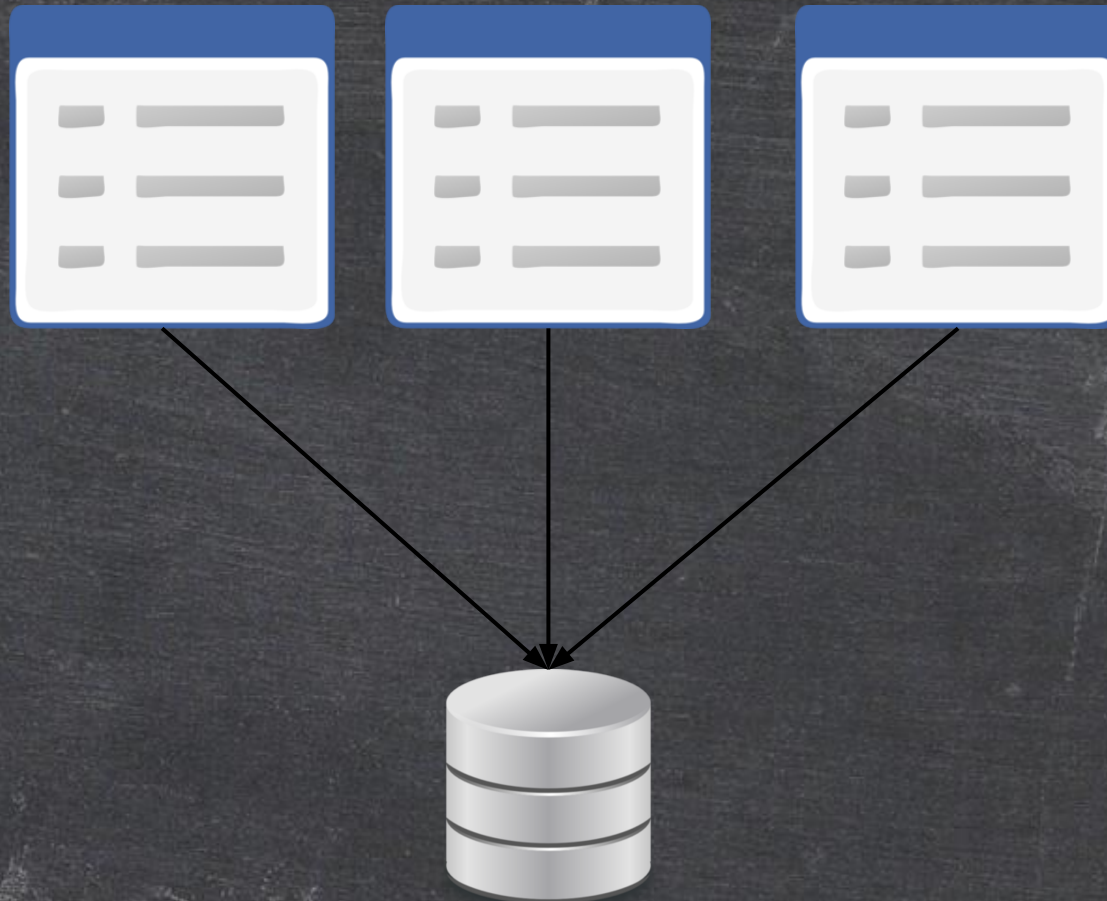


# Gestionale



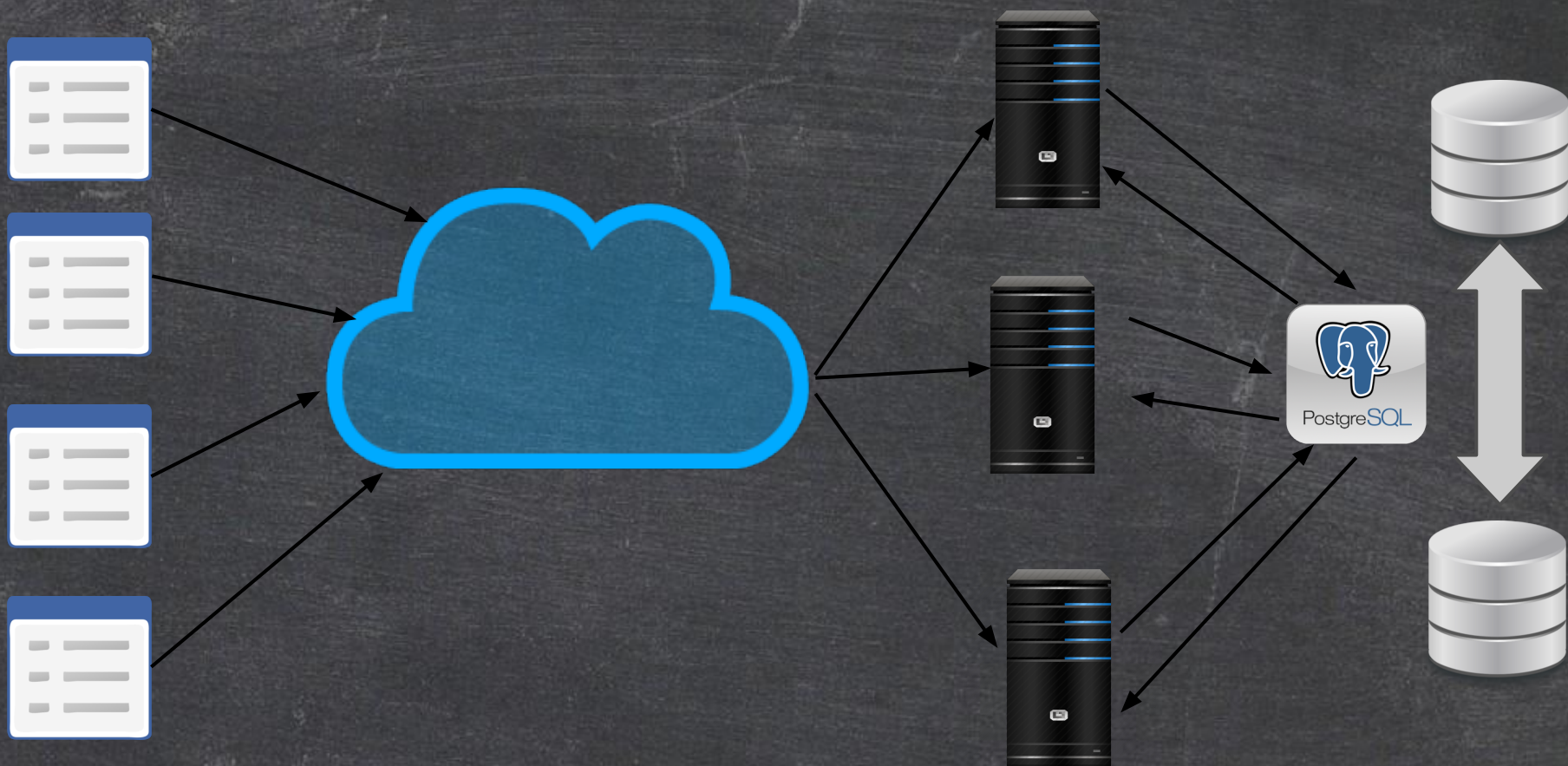
database (postgreSQL)

# Gestionale



database (postgreSQL)

# Gestionale



database (postgreSQL)

# Gestionale



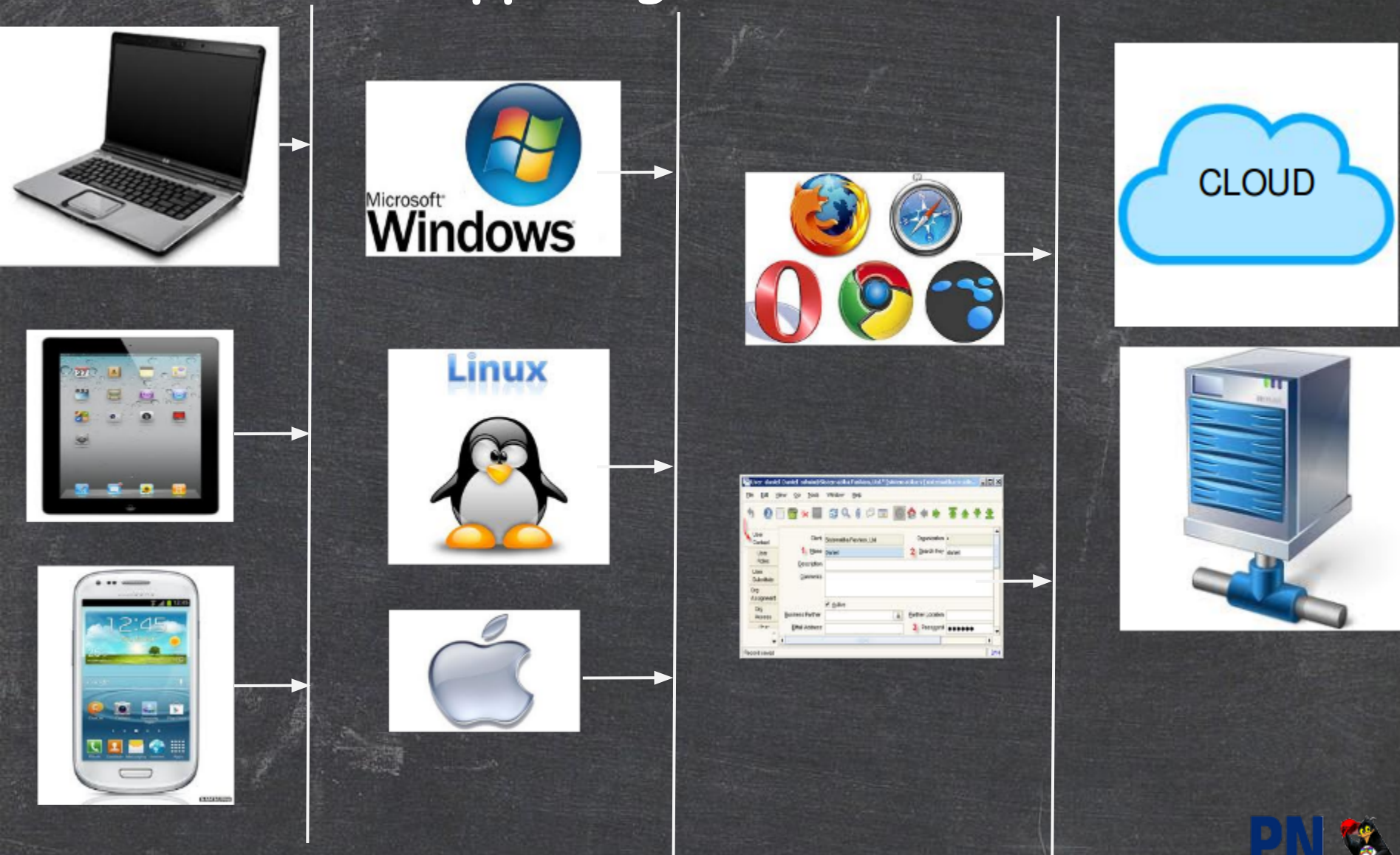
database (postgreSQL)

# Gestionale



database (postgreSQL)

# Mappa logica di Accesso



# Strumenti

1. Java 1.7 (openjdk) <http://openjdk.java.net>
2. Eclipse <https://www.eclipse.org>
3. osgi <http://www.osgi.org>
4. Git-Mercurial <http://bitbucket.org>
5. Buckminster <http://www.eclipse.org/buckminster>
6. ZK <http://www.zkoss.org/>
7. PostgreSQL <http://www.postgresql.org/>
8. JasperStudio <https://www.jaspersoft.com>
9. Web Services [http://it.wikipedia.org/wiki/Web\\_service](http://it.wikipedia.org/wiki/Web_service)
10. Application Dictionary interno
11. Pack in Pack out interno
- 12.

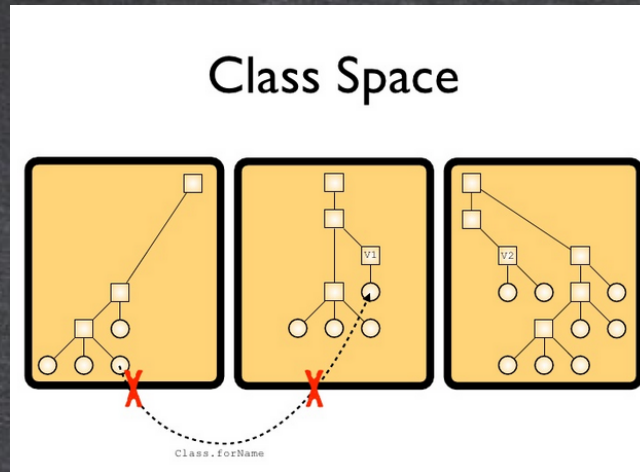


# Java 1.7 Openjdk

## Eclipse

# Osgi

<http://www.osgi.org>



stabilità  
modularità  
semplicità

# Live !

## Apache Felix Web Console Bundles



Id	Name	Version	Category	Status	Actions
39	▶ Adempiere Processes ( <i>org.adempiere.base.process</i> )	1.0.0.v20130206-1017		Resolved	▶ ⌵ ↺ 🗑️
38	▶ Callout ( <i>org.adempiere.base.callout</i> )	1.0.0.v20130206-1017		Resolved	▶ ⌵ ↺ 🗑️
40	▶ Http Services Servlet Source ( <i>org.adempiere.eclipse.equinox.http.servlet</i> )	1.1.0.v20100503		Active	■ ⌵ ↺ 🗑️
44	▶ install ( <i>org.adempiere.install;singleton:=true</i> )	1.0.0.v20130206-1017		Active	■ ⌵ ↺ 🗑️
53	▶ Jasper Report Web App ( <i>org.adempiere.report.jasper.webapp;singleton:=true</i> )	1.0.0.v20130206-1017		Active	■ ⌵ ↺ 🗑️



# Metodo implementativo

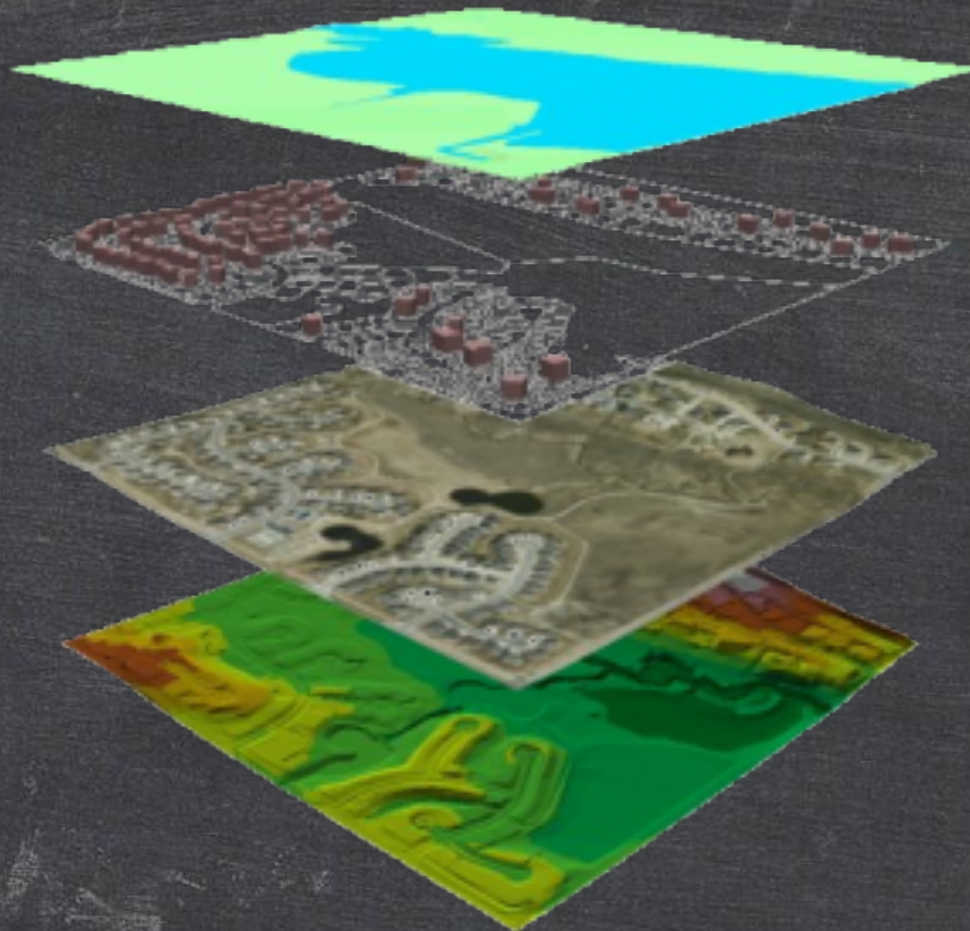
...

Produzione MRP

Localizzazione italia

**iDempiere Core**

# Metodo implementativo



# Metodo implementativo

...

...

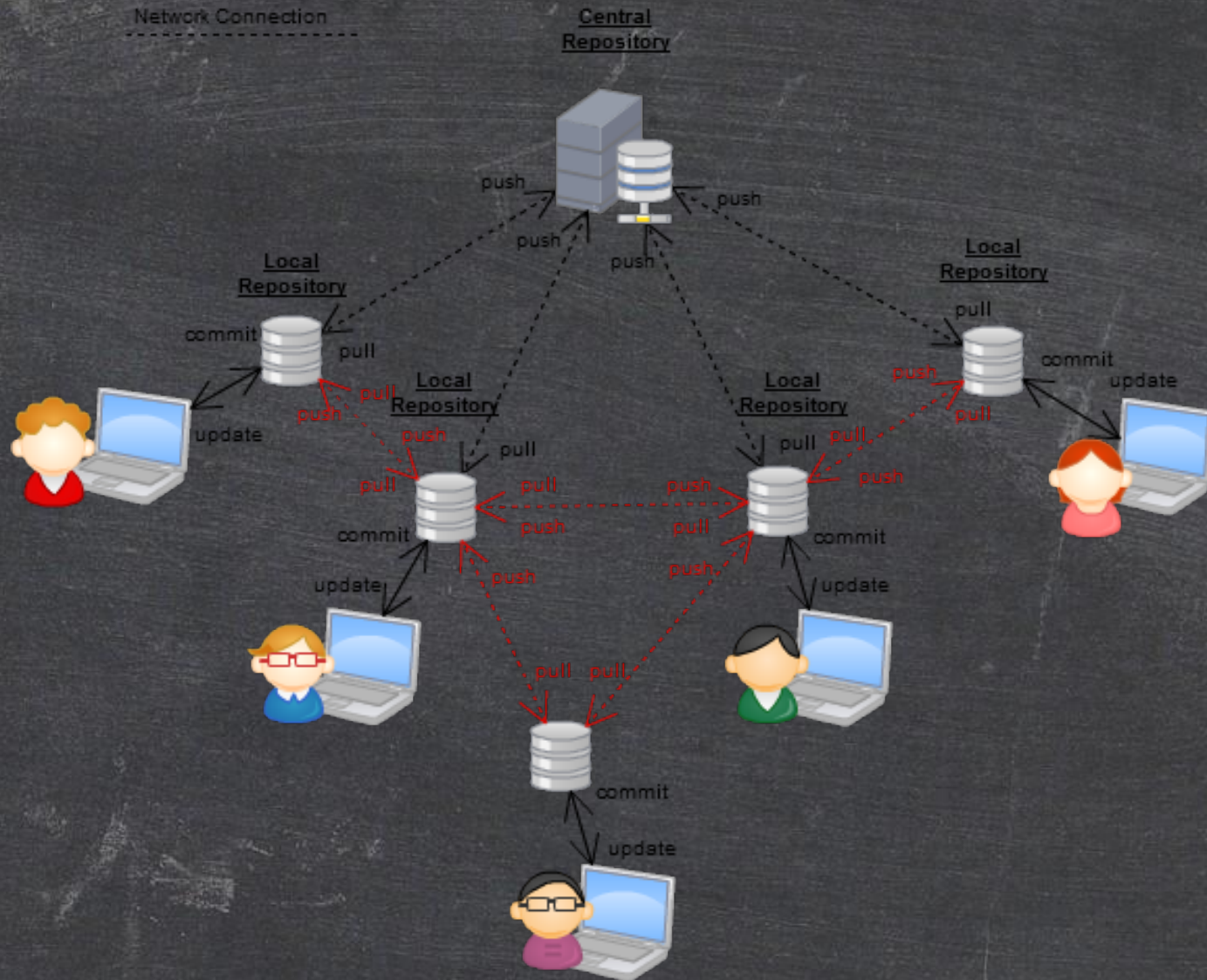
Produzione MRP

Localizzazione italia

**iDempiere Core**

- iDempiere Core (stabile, supporto, feedback, snello)
- plugin standard
- evoluzione dei plugin
- lavorare in gruppo
- supporto e condivisione

# Git-Mercurial



# Git-Mercurial

```
$ hg clone http://selenic.
```

```
com/repo/hello
```

```
$ cd hello
```

```
$ (edit files)
```

```
$ hg add (new files)
```

```
$ hg commit -m 'My changes'
```

```
$ hg push
```



# Git-Mercurial

The screenshot shows the Mercurial Workbench interface. On the left, a graph view displays commit history with nodes and colored lines (blue, green, red, purple) representing different branches and merges. The main area is a table of commit history with the following columns: Graph, Rev, Phase, Description, Author, Age, Local Time, and Branch.

Graph	Rev	Phase	Description	Author	Age	Local Time	Branch
	2750+		★ Working Directory ★	Adam	now	2013-04-25 11:58:49 -0600	default
	2750	draft	default tip Merge	Administrator	92 seconds	2013-04-25 13:57:17 -0400	default
	2749	draft	more contact updates	Administrator	110 seconds	2013-04-25 13:56:59 -0400	default
	2748	draft	Merge	Administrator	19 hours	2013-04-24 18:26:29 -0400	default
	2747	draft	quck update	Administrator	19 hours	2013-04-24 18:26:06 -0400	default
	2746	draft	Merge	Adam	2 minutes	2013-04-25 11:55:52 -0600	default
	2745	draft	tortoise	Adam	9 hours	2013-04-25 02:38:36 -0600	default
	2744	draft	trying to get Tortoise right	Adam	9 hours	2013-04-25 02:27:45 -0600	default
	2743	draft	test for Tortoise	Adam	9 hours	2013-04-25 02:18:51 -0600	default
	2742	draft	Wired up drive rates search	Adam	9 hours	2013-04-25 02:03:56 -0600	default
	2741	draft	refactoring—like a boss!	Adam	10 hours	2013-04-25 01:38:34 -0600	default
	2740	draft	almost done	Adam	12 hours	2013-04-24 23:39:25 -0600	default
	2739	public	client defaults	Adam	19 hours	2013-04-24 16:39:36 -0600	default
	2738	public	Merge	Adam	23 hours	2013-04-24 12:20:49 -0600	default
	2737	public	Merge	Administrator	24 hours	2013-04-24 13:32:40 -0400	default

At the bottom, there is a search filter box containing "### filter text ###", a refresh button, and status information: "Branch: default Copy message Options" and "Parent: 2750. (a01f217b743c) Merge".

# Live !

<http://idempiereitalia.cnetcloud.it>

[longo.marco69@gmail.com](mailto:longo.marco69@gmail.com)



# ZK

<http://www.zkoss.com>

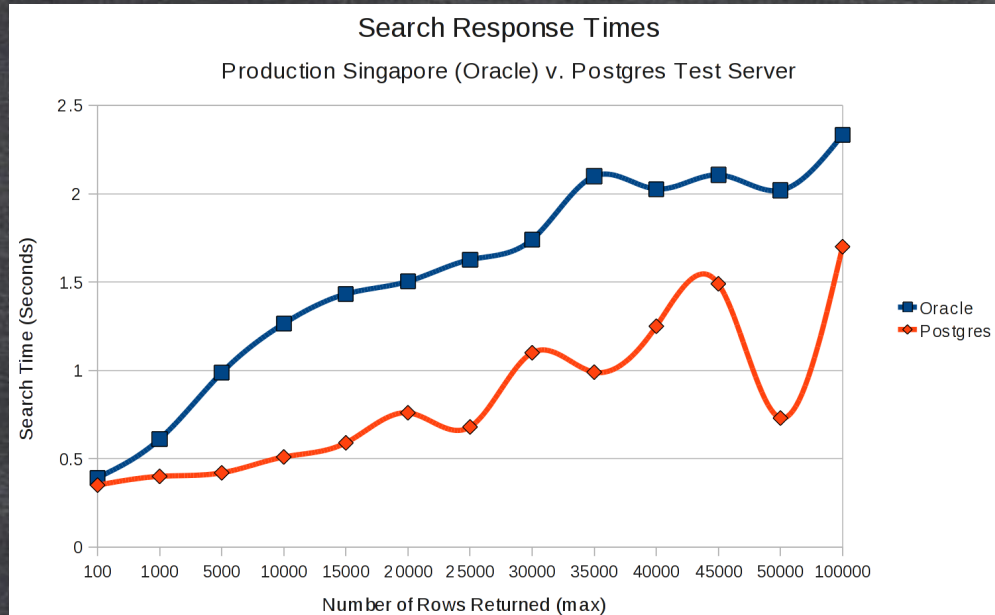
<http://www.zkoss.org/zkdemo/grid/hierarchy>

# Live !

# PostgreSQL



- <http://www.postgresql.org/>



# JasperStudio

Live !

# Application Dictionary

Plugin

Live !

# Altre Opportunità

- Business Intelligence <http://www.spagobi.org>
- eCommerce (virtuemart - magento )

# Fine !

DOMANDE ...

riferimenti

[longo.marco69@gmail.com](mailto:longo.marco69@gmail.com)